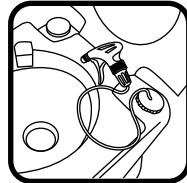
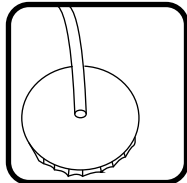
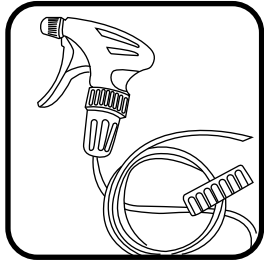


Additional Features



The cap can be installed on the opening of the fresh water tank.



The toilet sprayer can be used to flush the toilet bowl.



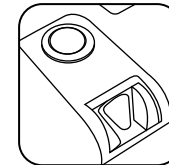
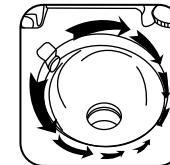
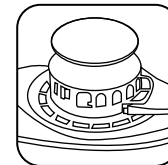
The toilet sprayer can also be used to wash one's butt after using the toilet.

Maintenance and Storage

1. Clean the inside of the bowl with a soft brush and mild, non-abrasive toilet cleaner.
2. Empty and clean both tanks before long-term storage.
3. Lubricate the slide valve periodically with silicone spray or white grease lubricant.
4. Remove the waste holding tank cap when storing for a long time.
5. Store away from direct sunlight or extreme temperatures.

PORTABLE TOILET

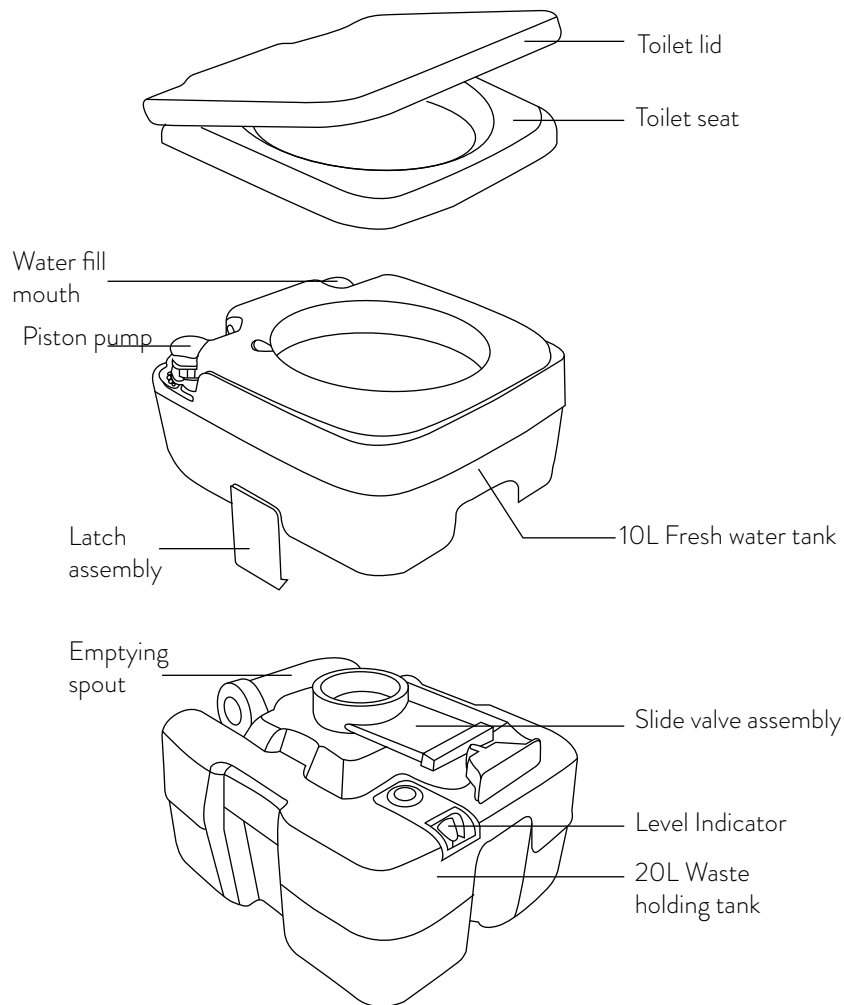
APC-PT20W



Thank you for choosing Alpcour! The portable toilet is made up of two detachable tanks that can be easily connected and disconnected with a latch. It is designed to be used with a toilet chemical suitable for portable toilets.

Please be sure to read and follow the instructions in this manual and save for future reference. This will enable you use the portable toilet safely and effectively.

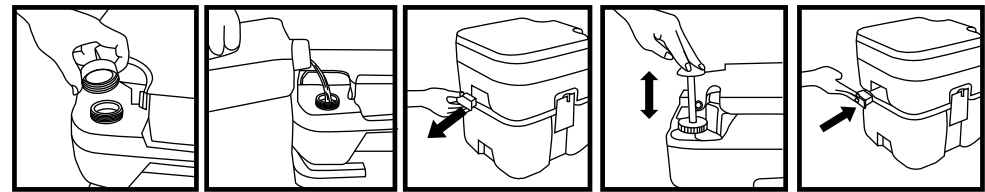
Parts



Caution

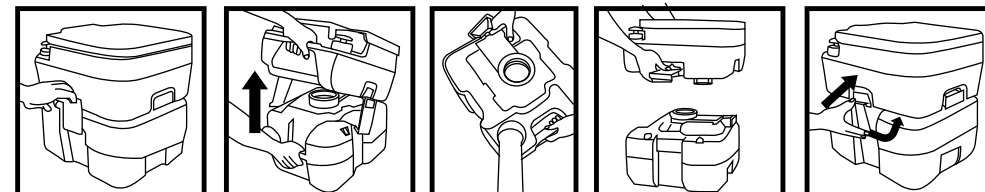
- Handle the product with care.
- Only use the portable toilet on a flat and levelled ground.
- Ensure all latches are locked during use.
- Ensure the waste holding tank is assembled correctly and cap is screwed on tightly.
- The maximum weight for the toilet is 200kg.
- Do not lean against toilet lid when using the toilet.
- Do not expose the toilet to direct sunlight for an extended period of time.
- Ensure the waste tank is emptied and cleaned regularly.

How to Use



1. Open the water tank cap, fill with fresh water and replace the lid.
2. Open slide valve to release any pressure in the tank.
3. Open seat cover and use the toilet.
4. After use, press the piston pump to flush the toilet
Note: For first time use, turn the piston pump clockwise to unlock it from its original position.
5. Close slide valve.

Emptying the tank



1. Open the latch and separate the tanks.
2. Take the waste holding tank to an authorised waste disposal point.
3. Rotate the emptying spout outwards, remove the cap and empty the tank.
4. Pour water into the tank and shake vigorously, then pour it out.
5. Reconnect the tanks and close the latch.
Note: Always empty the waste holding tank when filled and the level indicator turns fully red.